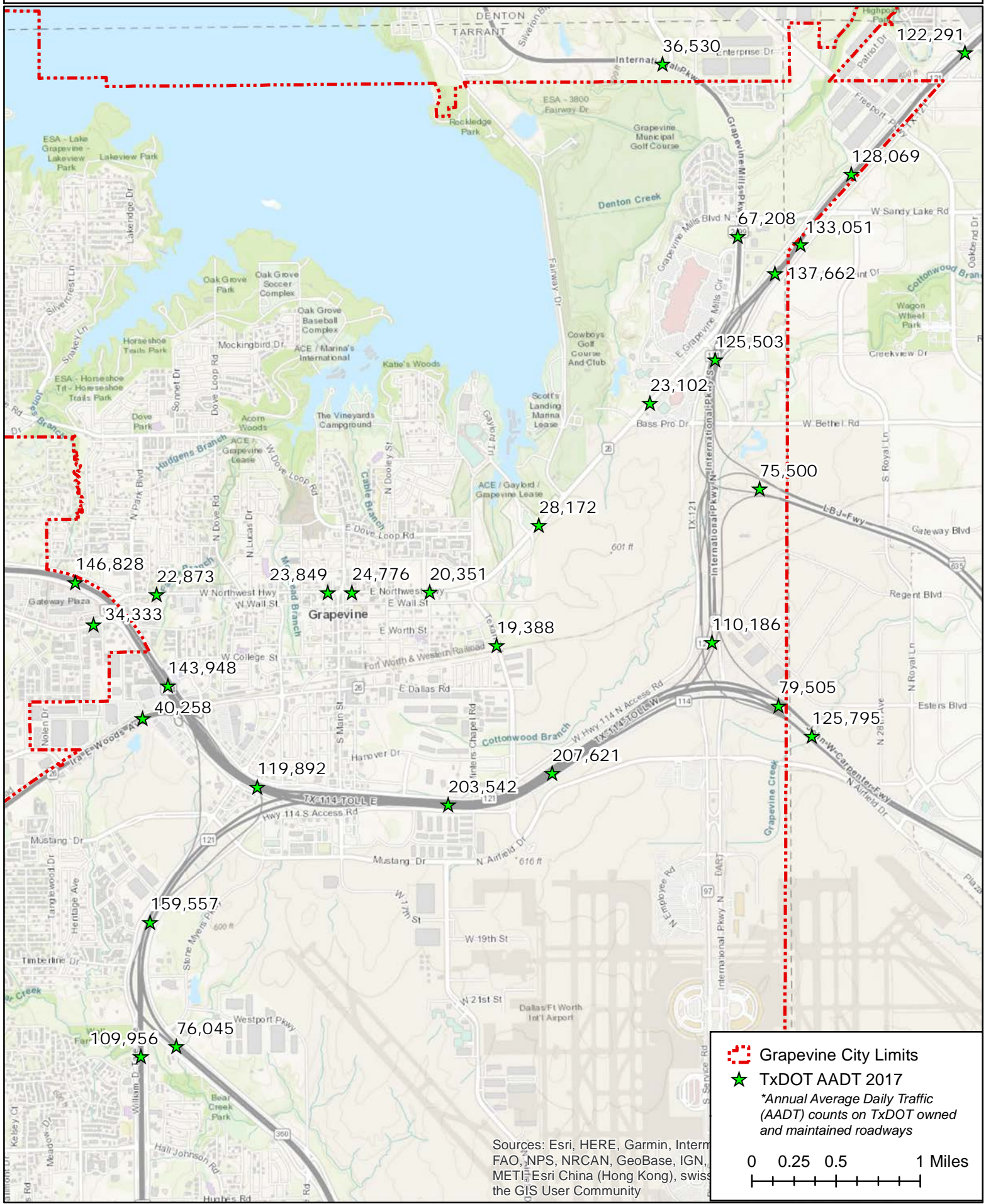


# City of Grapevine TxDOT AADT Traffic Counts 2017

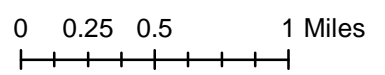


Grapevine City Limits

TxDOT AADT 2017

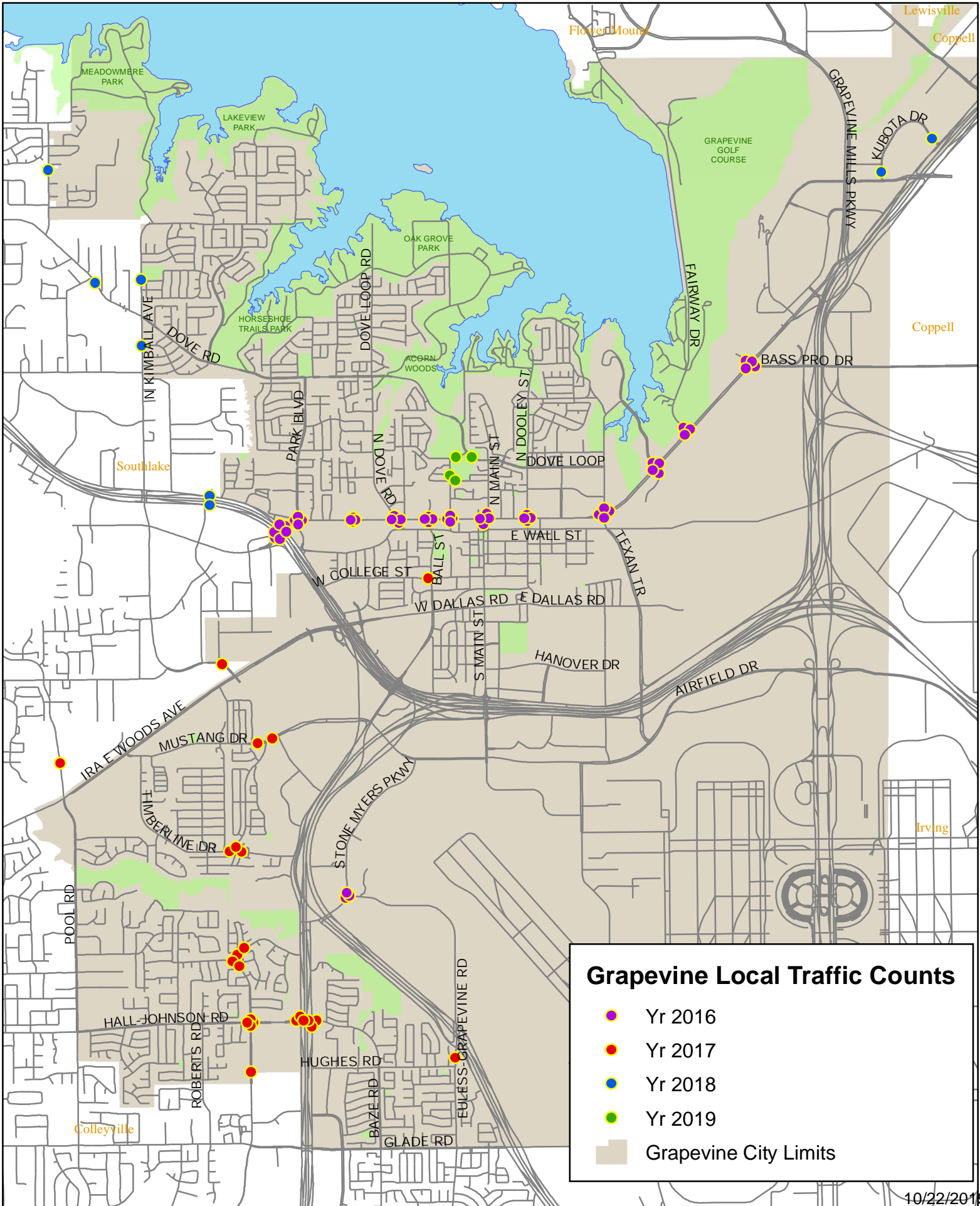
*\*Annual Average Daily Traffic (AADT) counts on TxDOT owned and maintained roadways*

Sources: Esri, HERE, Garmin, International FAO, NPS, NRCAN, GeoBase, IGN, METI, Esri China (Hong Kong), swiss, the GIS User Community



# City of Grapevine Local Traffic Counts Overview Map

Grapevine Local bi-directional, 24 hr ATR counts collected for the City Traffic Department.



<b>City of Grapevine Traffic Counts</b>		<b>StudyName</b>		<b>StartDate</b>		<b>Channel</b>		<b>TotalCount</b>		<b>EB_Count</b>		<b>WB_Count</b>		<b>NB_Count</b>		<b>SB_Count</b>	
<i>Bi-directional, 24 hr ATR counts collected for the City Traffic Department</i>																	
BALL SOUTH OF NW HWY				2016-04-07	BALL ST			9,002						4,505			4,407
BASS PRO NORTH OF HWY 26				2016-04-07	BASS PRO			1,309						647			662
BASS PRO SOUTH OF HWY 26				2016-04-07	BASS PRO			17,234						8,921			8,313
DOOLEY NORTH OF NW HWY				2016-04-07	DOOLEY			6,199						2,908			3,291
DOOLEY SOUTH OF NW HWY				2016-04-07	DOOLEY			4,408						2,311			2,097
DOVE NORTH OF NW HWY				2016-04-07	DOVE RD			8,142						4,035			4,107
DOVE SOUTH OF NW HWY				2016-04-07	DOVE RD			5,938						2,747			3,191
FAIRWAY NORTH OF HWY 26				2016-04-07	FAIRWAY			9,560						4,583			4,977
GAYLORD - GREAT WOLF NORTH OF HWY 26				2016-04-07	GAYLORD			5,043						2,468			2,595
GRAPEVINE SPRINGS NORTH OF NW HWY				2016-04-07	GRAPEVINE SPRINGS			668						331			337
GRAPEVINE SPRINGS SOUTH OF NW HWY				2016-04-07	GRAPEVINE SPRINGS			1,912						980			932
GAYLORD - GREAT WOLF SOUTH OF HWY 26				2016-04-07	GREAT WOLF DR			1,964						926			1,038
HWY 26 EAST OF BASS PRO				2016-04-07	HWY 26			24,431		14,867		9,564					
HWY 26 EAST OF FAIRWAY				2016-04-07	HWY 26			28,651		16,443		12,208					
HWY 26 EAST OF GAYLORD - GREAT WOLF				2016-04-07	HWY 26			34,197		18,912		15,285					
HWY 26 WEST OF BASS PRO				2016-04-07	HWY 26			28,736		16,708		12,028					
HWY 26 WEST OF FAIRWAY				2016-04-07	HWY 26			34,171		19,006		15,165					
HWY 26 WEST OF GAYLORD - GREAT WOLF				2016-04-07	HWY 26			32,198		17,905		14,293					
MAIN NORTH OF NW HWY				2016-04-07	MAIN			7,295						3,620			3,675
MAIN SOUTH OF NW HWY				2016-04-07	MAIN			10,497						5,221			5,276
NW HWY EAST OF BALL				2016-04-07	NW HWY			26,391		13,314		13,077					
NW HWY EAST OF DOOLEY				2016-04-07	NW HWY			22,060		11,278		10,782					
NW HWY EAST OF DOVE				2016-04-07	NW HWY			24,356		12,352		12,004					
NW HWY EAST OF GRAPEVINE SPRINGS				2016-04-07	NW HWY			25,549		13,187		12,362					
NW HWY EAST OF MAIN				2016-04-07	NW HWY			25,142		12,750		12,392					
NW HWY EAST OF PARK BLVD				2016-04-07	NW HWY			24,688		12,714		11,974					
NW HWY EAST OF SCRIBNER				2016-04-07	NW HWY			25,754		13,106		12,648					
NW HWY EAST OF SH 114 EBFR				2016-04-07	NW HWY			33,363		13,749		19,614					
NW HWY EAST OF SH 114 WBFR				2016-04-07	NW HWY			28,859		11,898		16,961					
NW HWY EAST OF TEXAN TRAIL				2016-04-07	NW HWY			31,903		18,140		13,763					
NW HWY WEST OF BALL				2016-04-07	NW HWY			24,804		12,462		12,342					
NW HWY WEST OF DOOLEY				2016-04-07	NW HWY			24,495		12,197		12,298					
NW HWY WEST OF DOVE				2016-04-07	NW HWY			25,252		12,986		12,266					
NW HWY WEST OF GRAPEVINE SPRINGS				2016-04-07	NW HWY			25,309		13,040		12,269					
NW HWY WEST OF MAIN				2016-04-07	NW HWY			24,936		12,629		12,307					
NW HWY WEST OF PARK BLVD				2016-04-07	NW HWY			28,622		11,794		16,828					
NW HWY WEST OF SCRIBNER				2016-04-07	NW HWY			26,284		13,163		13,121					
NW HWY WEST OF SH 114 EBFR				2016-04-07	NW HWY			23,856		7,337		16,519					
NW HWY WEST OF SH 114 WBFR				2016-04-07	NW HWY			33,072		13,499		19,573					
NW HWY WEST OF TEXAN TRAIL				2016-04-07	NW HWY			21,192		10,964		10,228					
PARK BLVD NORTH OF NW HWY				2016-04-07	PARK BLVD			17,263						8,881			8,382
PARK BLVD SOUTH OF NW HWY				2016-04-07	PARK BLVD			10,401						8,337			2,064
BALL NORTH OF NW HWY				2016-04-07	PONY PKWY			2,439						1,165			1,274

**City of Grapevine Traffic Counts**  
*Bi-directional, 24 hr ATR counts collected for the City Traffic Department*

StudyName	Channel	StartDate	TotalCount	EB_Count	WB_Count	NB_Count	SB_Count
TEXAN TRAIL NORTH OF NW HWY	RUTH WALL RD	2016-04-07	8,141			3,841	4,300
SCRIBNER NORTH OF NW HWY	SCRIBNER	2016-04-07	2,675			1,229	1,446
SCRIBNER SOUTH OF NW HWY	SCRIBNER	2016-04-07	1,033			616	417
SH 114 EBFR NORTH OF NW HWY	SH 114 EBFR	2016-04-07	9,756				9,756
SH 114 EBFR SOUTH OF NW HWY	SH 114 EBFR	2016-04-07	6,440				6,440
SH 114 WBFR NORTH OF NW HWY	SH 114 WBFR	2016-04-07	9,673			9,673	
SH 114 WBFR SOUTH OF NW HWY	SH 114 WBFR	2016-04-07	13,599			13,599	
TEXAN TRAIL SOUTH OF NW HWY	TEXAN TRL	2016-04-07	17,256			10,219	7,037
STONE MYERS PKWY NORTH OF WESTPORT PKWY	STONE MYERS PKWY	2016-06-28	8,617			4,336	4,281
STONE MYERS PKWY SOUTH OF WESTPORT PKWY	STONE MYERS PKWY	2016-06-28	10,421			6,279	4,142
WESTPORT PKWY EAST OF STONE MYERS PKWY	WESTPORT PKWY	2016-06-28	5,580	2,872	2,708		
W COLLEGE ST WEST OF BALL ST	W COLLEGE ST	2017-02-08	2,485	1,564	921		
HALL-JOHNSON RD @ HERITAGE AVE - EB APPROACH	HALL-JOHNSON RD	2017-02-15	21,770	10,379	11,391		
HALL-JOHNSON RD @ HERITAGE AVE - WB APPROACH	HALL-JOHNSON RD	2017-02-15	21,365	10,869	10,496		
HALL-JOHNSON RD @ SH 121 NBFR - EB APPROACH	HALL-JOHNSON RD	2017-02-15	15,243	8,927	6,316		
HALL-JOHNSON RD @ SH 121 NBFR - WB APPROACH	HALL-JOHNSON RD	2017-02-15	7,269	3,942	3,327		
HALL-JOHNSON RD @ SH 121 SBFR - EB APPROACH	HALL-JOHNSON RD	2017-02-15	22,632	11,411	11,221		
HALL-JOHNSON RD @ SH 121 SBFR - WB APPROACH	HALL-JOHNSON RD	2017-02-15	15,067	8,701	6,366		
HALL-JOHNSON RD @ HERITAGE AVE - NB APPROACH	HERITAGE AVE	2017-02-15	7,245			4,199	3,046
HALL-JOHNSON RD @ HERITAGE AVE - SB APPROACH	HERITAGE AVE	2017-02-15	2,714			1,241	1,473
HALL-JOHNSON RD @ SH 121 NBFR - NB APPROACH	SH 121 NBFR	2017-02-15	11,150			11,150	
HALL-JOHNSON RD @ SH 121 SBFR - SB APPROACH	SH 121 SBFR	2017-02-15	10,832				10,832
EULESS-GRAPEVINE RD; SH 360 to HUGHES RD	EULESS-GRAPEVINE RD	2017-03-08	6,284			2,866	3,418
City of Southlake Brumlow Ave (SH26 to Continental) Ref #69	BRUMLOW AVE	2017-04-17	13,299	0	0	6,753	6,546
City of Southlake S Kimball Ave (SH26 to Nolen) Ref #88	S KIMBALL AVE	2017-04-17	15,933	0	0	7,442	8,491
HERITAGE AVE BTWN HALL JOHNSON & CITY LIMIT	HERITAGE AVE	2017-06-29	5,513			3,178	2,335
HERITAGE AVE BTWN MUSTANG & TIMBERLINE	HERITAGE AVE	2017-06-29	2,261			1,174	1,087
HERITAGE BTWN WESTERN OAKS & WOODLAND HILLS	HERITAGE AVE	2017-06-29	2,370			872	1,498
HERITAGE BTWN WOODLAND HILLS & HALL JOHNSON	HERITAGE AVE	2017-06-29	2,264			951	1,313
MUSTANG BTWN HERITAGE AVE & WD TATE	MUSTANG DR	2017-06-29	15,502	7,464	8,038		
MUSTANG BTWN TIMBERLINE & HERITAGE AVE	MUSTANG DR	2017-06-29	13,177	6,339	6,838		
TIMBERLINE BTWN HERITAGE & SH 121 SBFR	TIMBERLINE DR	2017-06-29	3,955	2,477	1,478		
TIMBERLINE BTWN HERITAGE & TANGLEWOOD	TIMBERLINE DR	2017-06-29	4,028	2,499	1,529		
WESTERN OAKS BTWN HERITAGE & SH 121 SBFR	WESTERN OAKS DR	2017-06-29	2,691	1,035	1,656		
WOODLAND HILLS BTWN WT PARR & HERITAGE	WOODLAND HILLS DR	2017-06-29	1,144	437	707		
City of Southlake Dove Rd (Kimball to Carroll) Ref #36	DOVE RD	2018-05-22	4,084	1,965	2,119	0	0
City of Southlake Lonesome Dove Rd (Dove to Burney) Ref #68	LONESOME DOVE RD	2018-05-22	2,096	0	0	1,078	1,018
City of Southlake Kimball Rd (Highland to Dove) Ref #74	N KIMBALL AVE	2018-05-22	11,350	0	0	5,705	5,645
City of Southlake Kimball Rd (north of Dove) Ref #75	N KIMBALL RD	2018-05-22	6,147	0	0	3,005	3,142
City of Southlake SH114 EB FR (NW Hwy to Kimball) Ref #3E	SH 114 EBFR	2018-05-22	24,616	24,616	0	0	0
City of Southlake SH114 WB FR (NW Hwy to Kimball) Ref #3W	SH 114 WBFR	2018-05-22	24,711	0	24,711	0	0
Kimley-Horn Study	KUBOTA DR	2018-08-28	368				
Kimley-Horn Study	KUBOTA DR	2018-08-28	1,032				

**City of Grapevine Traffic Counts**

*Bi-directional, 24 hr ATR counts collected for the City Traffic Department*

StudyName	StartDate	Channel	TotalCount	EB_Count	WB_Count	NB_Count	SB_Count
Scribner St, north of Peach St (Kimley-Horn Study)	2019-01-02	N Scribner St	2,101				
Peach St, east of Scribner St (Kimley-Horn Study)	2019-01-02	W Peach St	422				
Shadybrook Dr, east of Scribner St (Kimley-Horn Study)	2019-01-02	Shadybrook Dr	1,842				
W Dove Loop Rd, south of Shadybrook Dr (Kimley-Horn Study)	2019-01-02	W Dove Loop Rd	7,533				